



THE JOURNAL OF CLINICAL PSYCHIATRY

Supplementary Material

Article Title: Benzodiazepine Use and Risk of Recurrence in Bipolar Disorder: A STEP-BD Report

Author(s): Roy H. Perlis, MD, MSc; Michael J. Ostacher, MD, MPH;
David J. Miklowitz, PhD; Jordan W. Smoller, MD, ScD;
Ellen B. Dennehy, PhD; Colleen Cowperthwait, BA;
Andrew A. Nierenberg, MD; Michael E. Thase, MD;
and Gary S. Sachs, MD

Citation: J Clin Psychiatry 2010;71(2):194–200

DOI Number: 10.4088/JCP.09m05019yel

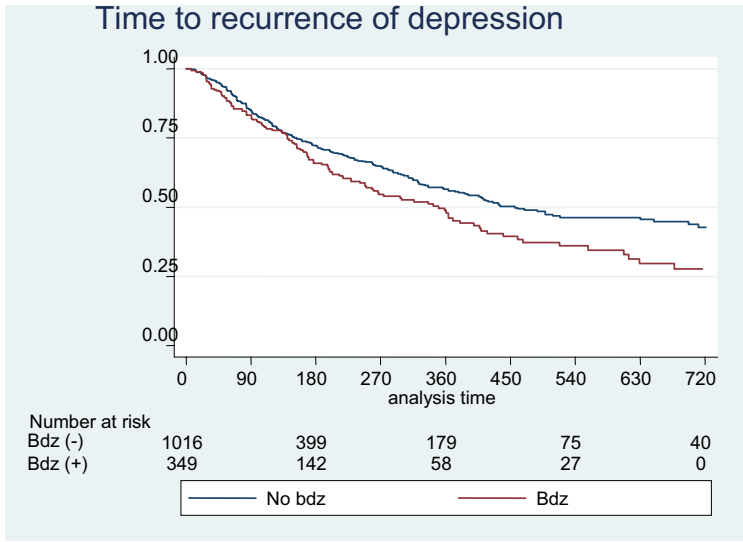
List of Supplementary Material for the article

1. [eFigure 1](#) Time to Relapse or Recurrence Among Benzodiazepine-Treated or -Untreated Bipolar I and II Patients, by Polarity of New Episode

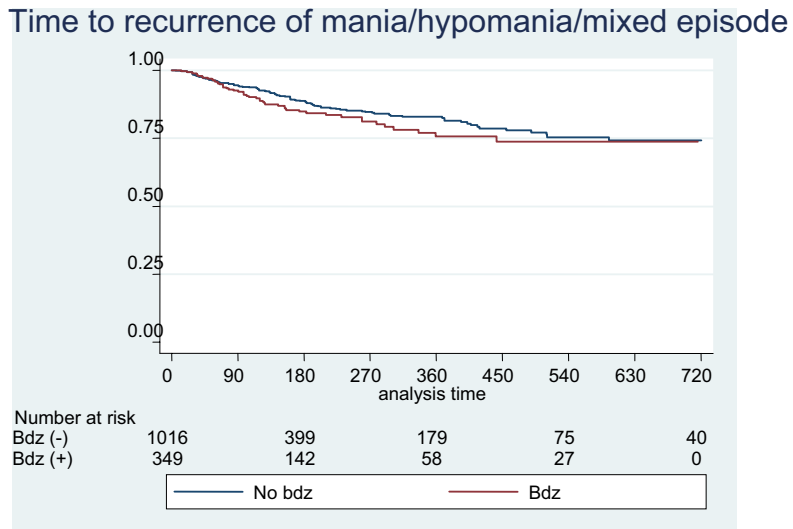
Disclaimer

This Supplementary Material has been provided by the author(s) as an enhancement to the published article. It has been approved by peer review; however, it has undergone neither editing nor formatting by in-house editorial staff. The material is presented in the manner supplied by the author.

Supplemental Figure 1. Time to relapse or recurrence, by polarity of new episode



HR=1.24 [1.00-1.53]



HR=1.25 [0.87-1.81]