



Supplementary Material

Article Title: Weight Change From 3-Year Observational Data: Findings From the Worldwide Schizophrenia Outpatient Health Outcomes Database

Author(s): Chris J. Bushe, MB, BS; Cees J. Slooff, MD, PhD; Peter M. Haddad, MD, FRCPsych; and Jamie L. Karagianis, MD

Citation: J Clin Psychiatry 2012;73

DOI Number: 10.4088/JCP.11m07246

List of Supplementary Material for the article

1. [Supplementary eTable 1](#) Monotherapy Completers: Baseline Characteristics by Drug (unadjusted data)
2. [Supplementary eFigure 1](#) Mean Weight Change from Baseline at 3 Years (monotherapy and monotherapy completers, adjusted data)
3. [Supplementary eFigure 2](#) Mean Change in BMI from Baseline at 3 Years
4. [Supplementary eFigure 3](#) Proportion of Patients Gaining $\geq 7\%$ of Baseline Bodyweight over 3 Years (adjusted data)

Disclaimer

This Supplementary Material has been provided by the author(s) as an enhancement to the published article. It has been approved by peer review; however, it has undergone neither editing nor formatting by in-house editorial staff. The material is presented in the manner supplied by the author.

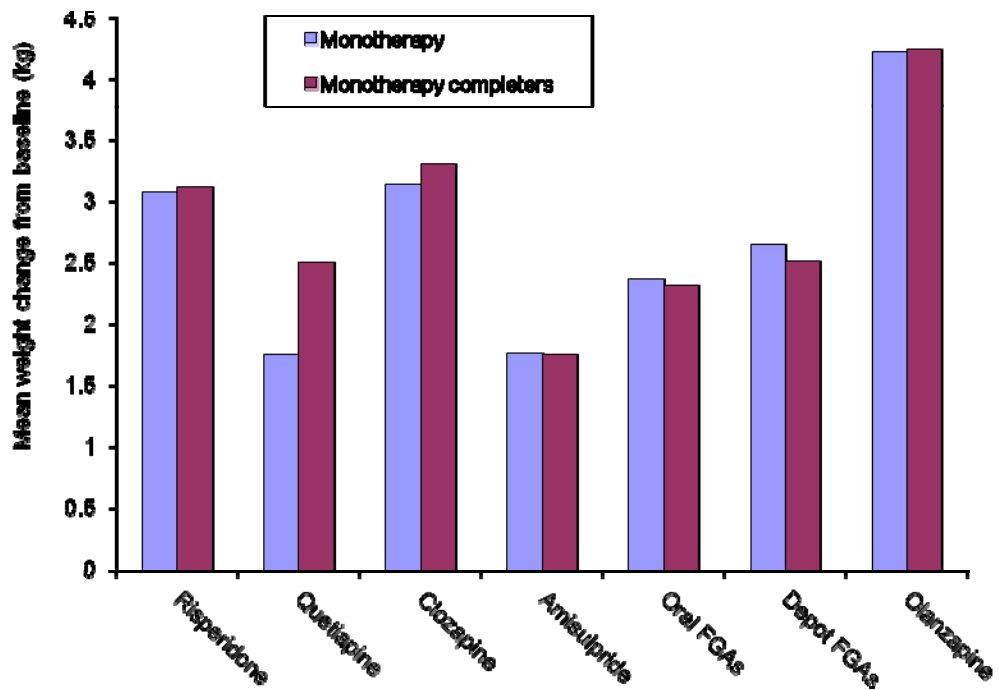
Supplementary eTable 1. Monotherapy Completers: Baseline Characteristics by Drug^a (Unadjusted data)

Baseline Characteristic	Risperidone (N = 857)	Quetiapine (N = 161)	Clozapine (N = 198)	Amisulpride (N = 86)	Oral FGAs (N = 279)	Depot FGAs (N = 137)	Olanzapine (N = 2,908)	Total (N = 4,626)	p value
Age (mean ± SD, years)	37.88 (12.85)	38.40 (12.84)	35.42 (10.76)	39.62 (13.85)	41.31 (11.97)	41.39 (11.61)	37.51 (13.11)	37.91 (12.91)	< .0001*
Male (N, %)	499 (58.2)	78 (48.4)	125 (63.1)	43 (50.0)	131 (47.0)	77 (56.2)	1,573 (54.1)	2,527 (54.6)	.0019
Overall symptoms (mean ± SD)	4.2 (0.97)	4.3 (0.95)	4.6 (0.99)	4.4 (0.99)	4.0 (1.11)	4.3 (1.01)	4.3 (1.01)	4.3 (1.01)	< .0001*
Baseline weight (mean ± SD, kg)	73.48 (14.35)	75.66 (13.34)	76.23 (14.39)	74.28 (16.45)	73.89 (14.22)	76.38 (15.93)	72.38 (14.01)	73.11 (14.23)	< .0001*
BMI (mean ± SD, kg/m ²)	25.75 (4.63)	26.55 (4.55)	26.39 (4.37)	25.48 (4.93)	26.14 (4.30)	26.13 (4.32)	25.30 (4.21)	25.55 (4.35)	< .0001*
BMI category, (N, %)									0.0140
Underweight	21 (2.5)	1 (0.6)	2 (1.0)	2 (2.3)	1 (0.4)	2 (1.5)	78 (2.7)	107 (2.3)	
Normal	384 (44.8)	64 (39.8)	76 (38.4)	42 (48.8)	118 (42.3)	52 (38.0)	1,365 (46.9)	2,101 (45.4)	
Overweight	306 (35.7)	63 (39.1)	84 (42.4)	27 (31.4)	112 (40.1)	56 (40.9)	1,053 (36.2)	1,701 (36.8)	
Obese	132 (15.4)	30 (18.6)	34 (17.2)	14 (16.3)	45 (16.1)	26 (19.0)	373 (12.8)	654 (14.1)	

^aGLIMMIX model adjusted for the following variables; age, gender, region, height, weight, and BMI (except where outcome was weight). *Overall F-test (ANOVA)

ANOVA, analysis of variance; BMI, body mass index; FGA, first-generation antipsychotics; SD, standard deviation

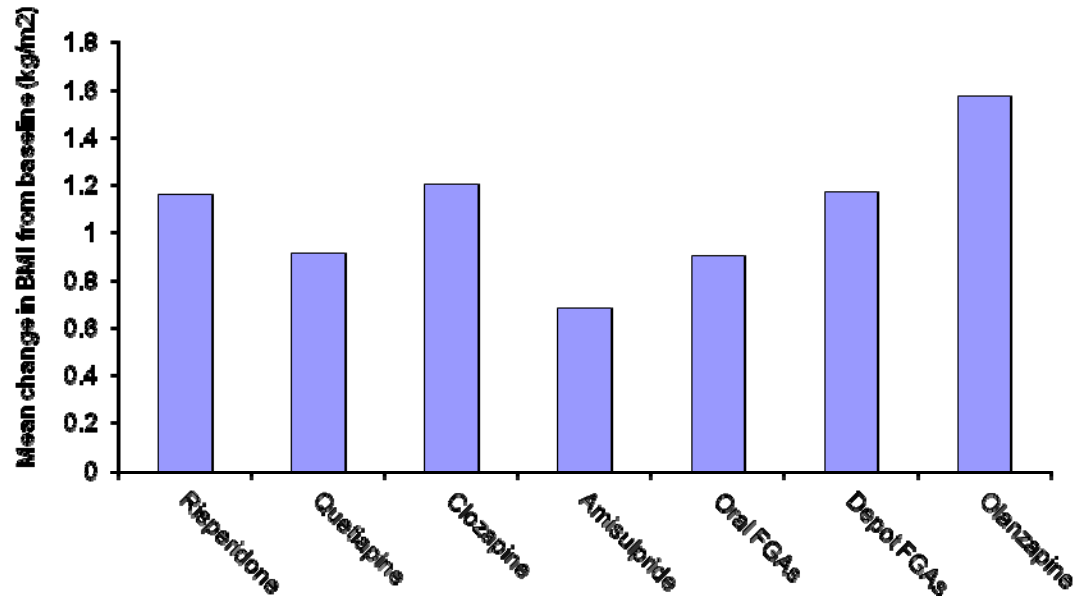
Supplementary eFigure 1. Mean Weight Change from Baseline at 3 Years (Monotherapy and Monotherapy Completers, Adjusted Data)



Patient Cohort	Drug						
	Risperidone	Quetiapine	Clozapine	Amisulpride	Oral FGAs	Depot FGAs	Olanzapine
N	786	149	187	78	270	130	2706
Monotherapy							
Mean adjusted weight change from baseline (kg)	3.07	1.75	3.14	1.76	2.37	2.64	4.22
(95% CI)	(2.68; 3.46)	(0.97; 2.52)	(2.32; 3.96)	(0.54; 2.98)	(1.77; 2.96)	1.77; 3.52)	(3.99; 4.45)
Monotherapy completers							
Mean adjusted weight change from baseline (kg)	3.12	2.5	3.30	1.75	2.31	2.51	4.24
(95% CI)	(2.61;3.62)	(1.39; 3.61)	(2.29; 4.31)	(0.22; 3.28)	(1.47; 3.15)	(1.31; 3.71)	(3.94; 4.54)

FGAs, first-generation antipsychotics

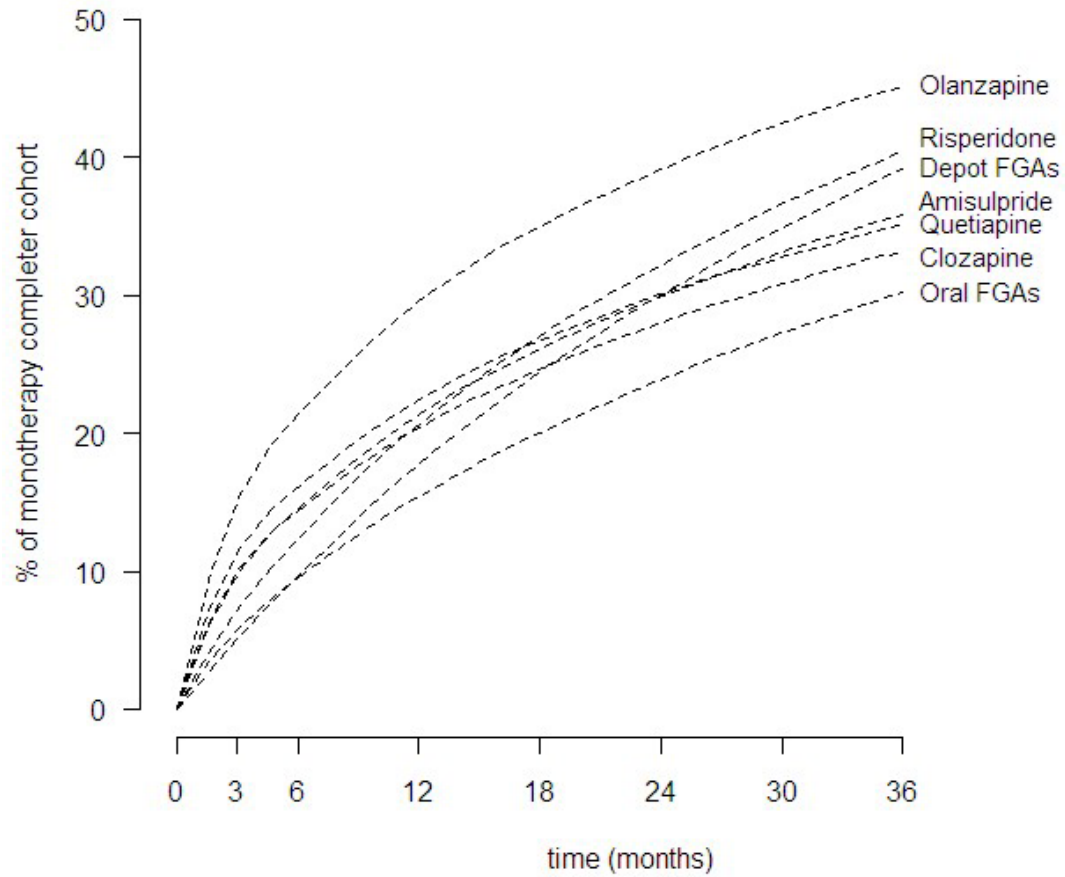
Supplementary eFigure 2. Mean Change in BMI from Baseline at 3 Years



	Drug						
	Risperidone	Quetiapine	Clozapine	Amisulpride	Oral FGAs	Depot FGAs	Olanzapine
N	780	148	186	78	269	129	2686
Mean change in BMI from baseline (kg/m ²)	1.16	0.91	1.20	0.68	0.90	1.17	1.57
(95% CI)	(0.99; 1.34)	(0.52; 1.30)	(0.85; 1.56)	(0.15; 1.22)	(0.61; 1.20)	(0.75; 1.59)	(1.47; 1.68)

FGAs, first-generation antipsychotics

Supplementary eFigure 3. Proportion of Patients Gaining $\geq 7\%$ of Baseline Bodyweight over 3 Years (Adjusted Data)



FGAs, first-generation antipsychotics